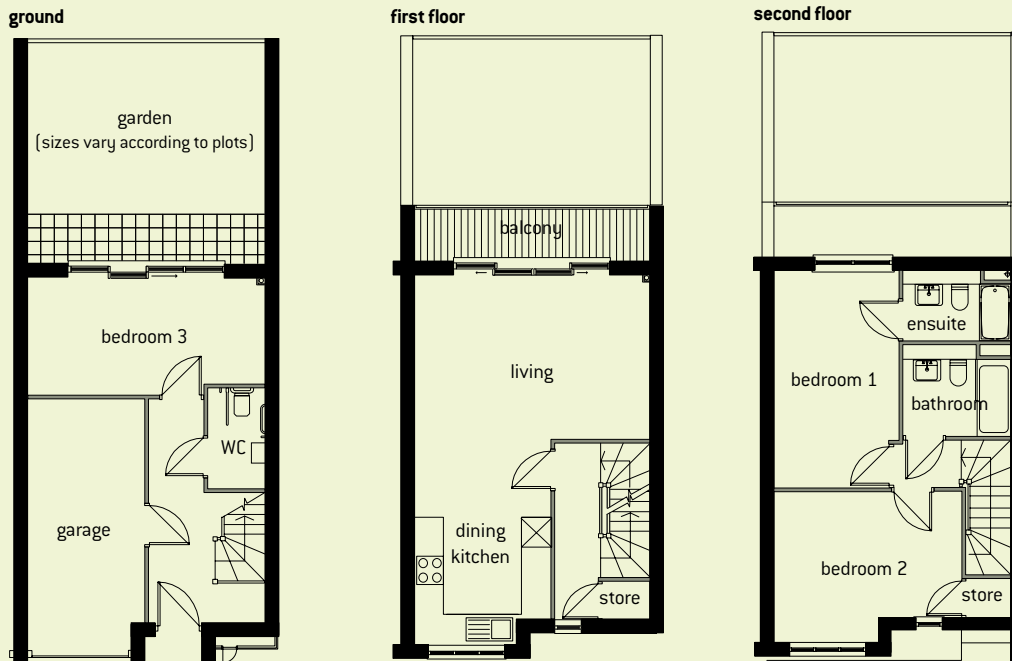


woodland townhouses



ground	metric	imperial	second floor	metric	imperial
bedroom 3	2.45m [†] x 5.10m	8'1" x 16'9"	bedroom 1 + ensuite	4.70m [†] x 4.95m [†]	15'5" x 16'3"
garage	2.50m x 5.50m	8'2" x 18'1"	bedroom 2	4.05m [†] x 3.20m [†]	13'3" x 10'6"
first floor			Overall Square Footage: 1310		
living	3.55m [†] x 5.10m [†]	11'8" x 16'9"	†maximum sizes		
dining kitchen	4.45m [†] x 2.95m [†]	14'7" x 9'8"			

Contemporary
three-bed
townhouses
with woodland
views from
£179,950

woodland specification

Townhouse Specification

The townhouses are available in an alternative layout design which is a mirror image of the plans above. Each townhouse is arranged over three storeys with integral garage, garden and balcony to first floor.

- Kitchen oven, ceramic hob and extractor hood plumbing for washing machine and dishwasher
- Flooring wood laminate to entrance hall and throughout living areas carpets to bedrooms, stairs and landings
- Bathroom ceramic wall tiles to bathroom/shower bath with over-head shower heated towel rail ceramic tiled floor
- Lighting pendant lighting to bedrooms and living room. Spotlights to kitchen, hallways, bathroom and ensuite
- Integral garage
- Gas combi boiler
- Garden to each townhouse
- Balcony to first floor
- Door entry system to vehicle/pedestrian gate
- A purpose built fully equipped gymnasium, sauna and steamroom is available for all residents to use.
- BT points/TV aerial points to living area and all bedrooms

