



Stunning three-bed townhouse with views of the historic King William IV fishing lake prices from £169,950

lakeview specification

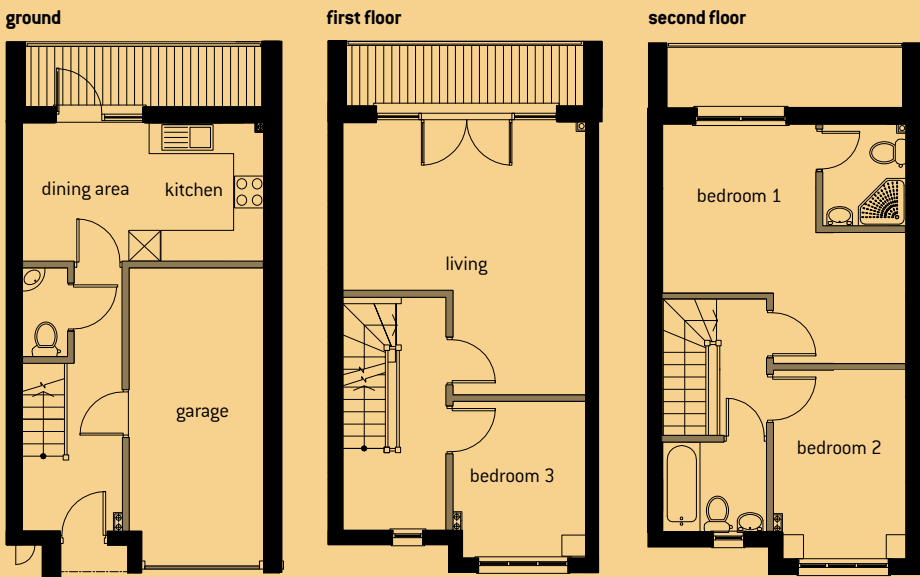
Townhouse Specification

Each townhouse is arranged over three storeys with integral garage and balcony to first floor.

The townhouses are available in an alternative layout design which is a mirror image of the plans below.

- Kitchen oven, hob and extractor hood plumbing for washing machine
- Flooring wood laminate to entrance hall and throughout living areas carpets to bedrooms, stairs and landings
- Bathroom ceramic wall tiles to bathroom/shower bath with over-head shower heated towel rail ceramic tiled floor
- Lighting pendant lighting to bedrooms, living room and cloak room. Spotlights to kitchen, hallways, bathroom and ensuite
- Integral garage
- Gas combi boiler
- Balcony to ground and first floor
- Door entry system to vehicle/pedestrian gate
- A purpose built fully equipped gymnasium, sauna and steamroom is available for all residents to use
- BT points/TV aerial points to living area

lakeview townhouses



	metric	imperial
ground		
dining kitchen	2.55m x 4.45m	8'4" x 14'7"
garage	5.60m x 2.50m	185 x 82
first floor		
living	4.45m [†] x 5.10m	14'7" x 16'9" [†]
bedroom 3	2.45m x 2.90m	81 x 96
second floor		
bedroom 1 + ensuite	4.45m [†] x 4.50m [†]	14'7" x 14'9" [†]
bedroom 2	2.45m x 3.55m	81 x 118

Overall Square Footage: 1189
[†]maximum sizes